



For guests coming by train

JR Hakata Station (Approx. 40 minutes by Kyushu Shinkansen line)

→ JR Shintamana Station

JR Kumamoto Station (Approx. 9 minutes by Kyushu Shinkansen line /

Approx. 30 minutes by local train)

→ JR Shintamana Station

JR Kagoshima-chuo Station (Approx. 1 hour by Kyushu Shinkansen line)

→ JR Shintamana Station

JR Shintamana Station → (Approx. 7 minutes by fixed-route bus)
→ Tsukasa Royal Hotel

Renting a car from JR Shintamana Station is also a convenient way to reach the hotel.
(The travel time does not include wait time.)

For guests coming by car

For Fukuoka (Dazaifu IC) (Approx. 60 minutes by Kyushu Expressway)

→ Kikusui IC

For Kumamoto (Kumamoto IC) (Approx. 20 minutes by Kyushu Expressway)

→ Kikusui IC

For Kagoshima (Kagoshima IC) (Approx. 2 hours by Kyushu Expressway)

→ Kikusui IC

Kikusui IC → (Approx. 20 minutes) → Tsukasa Royal Hotel

For Nagasaki (Approx. 1 hour and 20 minutes by car) →

Tairakou (Approx. 40 minutes by ferry) → Nagasakou

For Shimabara (Approx. 1 hour and 30 minutes by car) →

Shimabaragaikou (Approx. 30 minutes by ferry) → Kumamoto Shinminato

Nagasakou → (Approx. 30 minutes by car) → Tsukasa Royal Hotel

Kumamoto Shinminato → (Approx. 1 hour by car) → Tsukasa Royal Hotel

Kumamoto Shinminato (Approx. 1 hour by expressway)

→ Tsukasa Royal Hotel

Fukuoka Airport (Approx. 1 hour by expressway)

→ Tsukasa Royal Hotel

JR Kumamoto Station (Approx. 1 hour by car)

→ Tsukasa Royal Hotel

These are the automobile routes to our hotel. Please use our hotel's free parking lot.
(The travel time does not include wait time.)

If you contact us in advance, we can pick you up from Tamana Station or Shintamana Station. Please contact us.



50-1 Ryuganji, Tamana-shi, Kumamoto-ken 865-0061

TEL 0968-73-8888 FAX 0968-73-8008

<https://www.tsukasa-royal-hotel.co.jp/>

E-mail: info@tsukasa-royal-hotel.co.jp

TSUKASA ROYAL HOTEL

KUMAMOTO TAMANA



A hotel where you can enjoy the richness of Kumamoto with all five senses.

In a kingdom of fire, you are welcomed by the warm lights of Kumamoto, and received by the flowing waterfall that makes you feel as if you are in a city of water.

Welcome to the Tsukasa Royal Hotel, surrounded by lush nature and a Japanese-style garden

We provide special comfort with our Apanese Umbrella Bath and Bamboo Lamp Bath that originated from a festival of Kumamoto

To provide all our guests with the best possible experience, we have spared no efforts so that you can enjoy cuisine and relaxation unique to this area, in a refined setting.





LUXURY JUNIOR SUITE

Luxury Junior
Suite

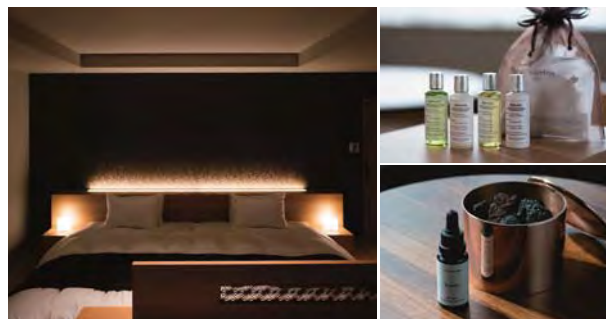
- Number of rooms: 4
- Max. number of guests: 4
- Area: 64 m²
- Bed size: Serta 200 × 140 cm × 2
(Sofa bed) 200 × 100 cm × 2

Tranquility flowing down, resonating with the magnificent view.

The dynamic windows decorate the room by creating a single portrait of the gallant figures of Mt. Kinbo and Mt. Unzen.

There is a spacious Western-style room. The view enriches your moments of calmness, while the space with ryukyu-tatami mats laid out in the corner give you quietness with a Japanese feel.

In this space, while you are surrounded by sophisticated Western styles, the Japanese crafts of Kumiko Okawa, spread throughout Kyushu, provide a brilliant softness with light and shadow.

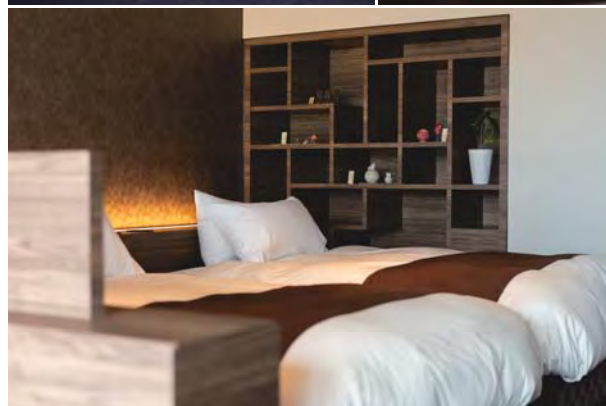
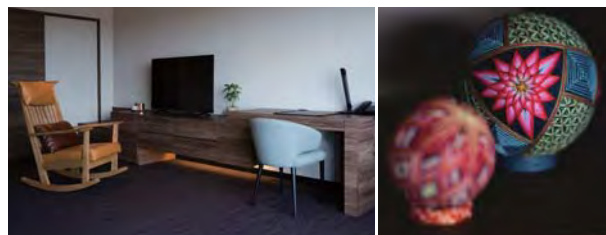




**LUXURY
DELUXE
TWIN**

Luxury Deluxe
Twin

- ☐ Number of rooms: 6
- ☐ Max. number of guests: 3
- ☐ Area: 53 m²
- ☐ Bed size: Serta 200 × 122 cm × 2
(Sofa bed) 200 × 100 cm × 1



The culture and colors of Kumamoto fused into the height of cheerfulness.

Here, you can watch the flow of time by the windowsill. Relax as this environment heals your body and mind.

The openwork techniques of Kumiko Okawa used throughout the interior are manipulations of light. The shelf is a traditional craft of Kumamoto with glamorous coloring.

The warmth of the wood provides a rich texture in the room's luxuriant spaciousness, and it brings you back to a period when time passed by slowly.



JAPANESE ROOM TWIN

Japanese Room Twin 18
Tatami Mats
[Japanese room + bedroom]

- ☐ Number of rooms: 10
- ☐ Max. number of guests: 8
- ☐ Area: 55 m²
- ☐ Bed size: Serta 200 × 122 cm × 2 Futon

The traditional beauty evokes a new sense of peace of mind.

The room inherits the Japanese mentality of being at harmony with nature. We have spared no efforts to create Japanese rooms where you can enjoy the blessings of the light, breezes, and views to your heart's content.

Also, the Japanese room 18 tatami mats in size features the traditional beauty of Japan, fused with Western style that can accommodate all kinds of guests.

Elegant tranquility and smart comfort.

Enjoy your trip in your own way in one of our spacious rooms.

JAPANESE ROOM

Japanese Room
12.5 Tatami Mats

- ☐ Number of rooms: 18
- ☐ Max. number of guests: 6
- ☐ Area: 53 m²
- ☐ Bed size: Futon





SUPERIOR TWIN

Superior Twin

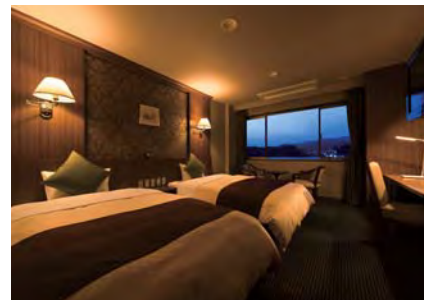
- ☐ Number of rooms: 8
- ☐ Max. number of guests: 3
- ☐ Area: 31 m²
- ☐ Bed size: 200 × 140 cm × 2
(Sofa bed) 170 × 95 cm × 1

Natural calmness, and relaxation to your heart's content.

We have arranged high-quality amenities to create stylish comfort and the peace of mind that adults want.

These rooms are functional and stylish, while providing a feeling of serenity.

The rooms are multifunctional. For example, you can use one for a business trip, lodging with your family, or a rambunctious group trip.



STANDARD TWIN

Standard Twin

- ☐ Number of rooms: 8
- ☐ Max. number of guests: 2
- ☐ Area: 22 m²
- ☐ Bed size: 200 × 120 cm × 2



The appearance of a festival of Kumamoto lights a famous hot spring of the region.

We have two baths that incorporate the motifs of the Tourou Roman Hyakka Hyakusai Festival of Yamaga, which is close to Tamana.

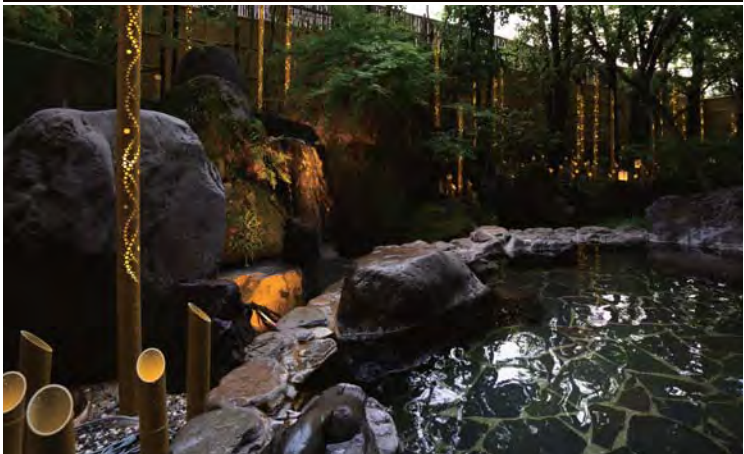
Enjoy the elegance of the Yamaga lanterns, famous as offerings in Shinto rituals when welcoming feudal lords in the past, together with a bath where the water flows directly from the hot spring water source.

This famous opulent hot spring, with its proud 1,300 years of history, is lit with dreamy lanterns. Here, your eyes and skin can experience an elegant healing experience.





Apinese Umbrella Bath



Bamboo Lamp Bath

ONSEN
APANESE UMBRELLA BAMBOO LAMP
Umbrellas Apinese Umbrella Bath Bamboo lamps Bamboo Lamp Bath

The art of consoling
weary travelers with the
steam of the bath.

Kumamoto, a kingdom of fire and water.

The lamps and baths come together to paint an image, similar to that of a great work of art, to console weary travelers in a unique way.

The Apinese Umbrella Bath has Japanese umbrellas to represent the overwhelming forces of nature, such as the fiery Mt. Asosan. The Bamboo Lamp Bath has bamboo lamps to represent clear water that purifies everything. The areas around these baths are filled with fluctuating aesthetics.

Basic Information about the Hot Spring

Name of hot spring	Ryuganji Onsen
Spring quality	Weak alkaline, expansive hot spring
Water temperature	39.7 degrees Celsius
Bath types and condition	Large communal bath / open-air bath (Both use only hot spring water.)
Water circulation and use of kakenagashi	Kakenagashi method (The bath is constantly filled with new water from the hot spring.)
Water added to hot spring	None
Use of bath additives, etc.	None
Conditions for which the baths provide therapeutic effects	Nerve pain / muscle pain / joint pain / frozen shoulders / motor paralysis / joint stiffness / bruises and sprains / chronic digestive diseases / hemorrhoids / poor blood circulation / recovery following an illness / recovery from fatigue / promotion of health
Do not use the baths if you have any of these conditions	Acute diseases (particularly those accompanied by a fever) / active tuberculosis / malignant tumors / serious heart disease or respiratory dysfunction / kidney dysfunction / hemorrhagic disease / advanced anemia Also, general diseases that are progressing / pregnancy (the early or late stages in particular)



RESTAURANT

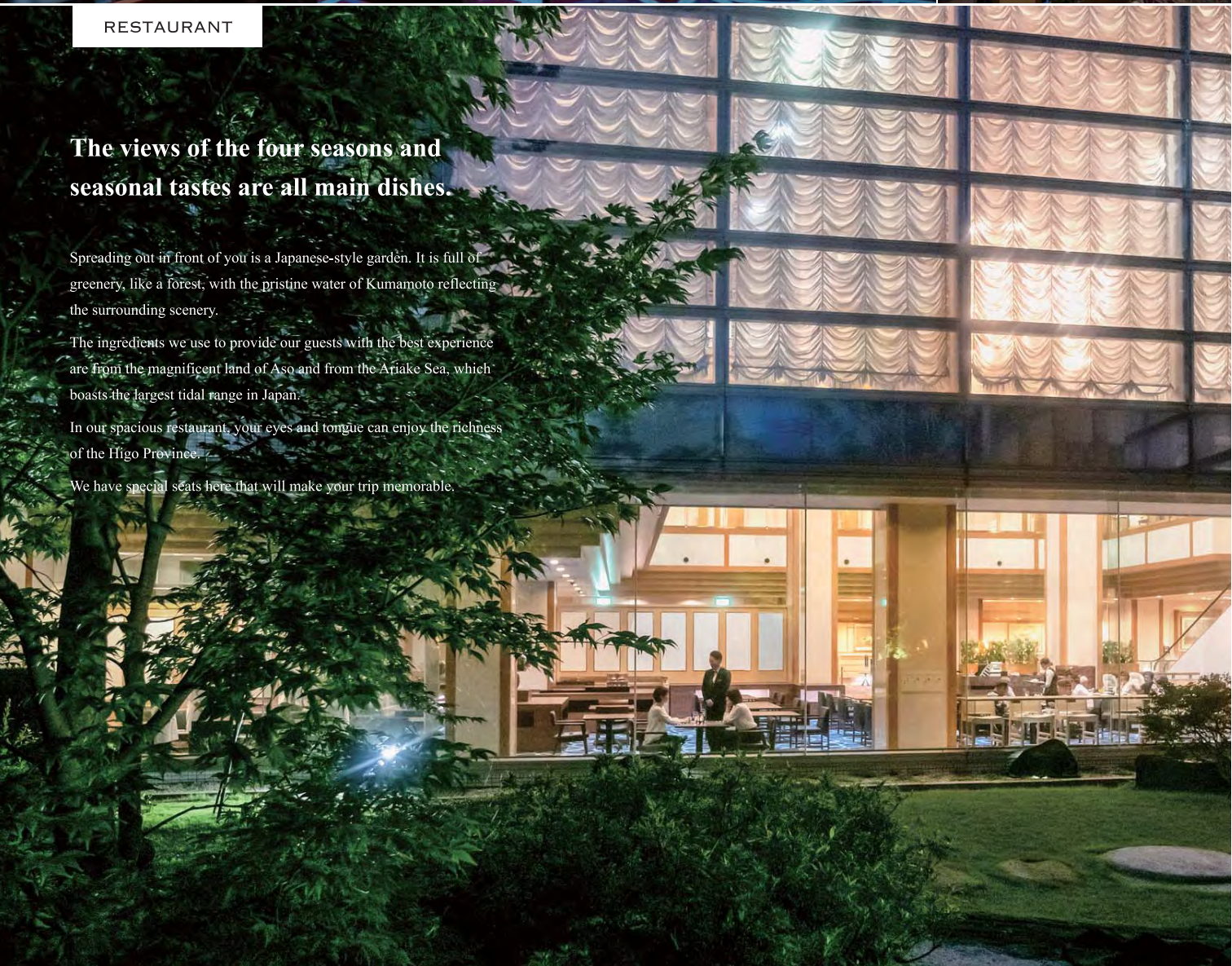
The views of the four seasons and seasonal tastes are all main dishes.

Spreading out in front of you is a Japanese-style garden. It is full of greenery, like a forest, with the pristine water of Kumamoto reflecting the surrounding scenery.

The ingredients we use to provide our guests with the best experience are from the magnificent land of Aso and from the Ariake Sea, which boasts the largest tidal range in Japan.

In our spacious restaurant, your eyes and tongue can enjoy the richness of the Higo Province.

We have special seats here that will make your trip memorable.





CUISINE

FRENCH / CHINESE
JAPANESE

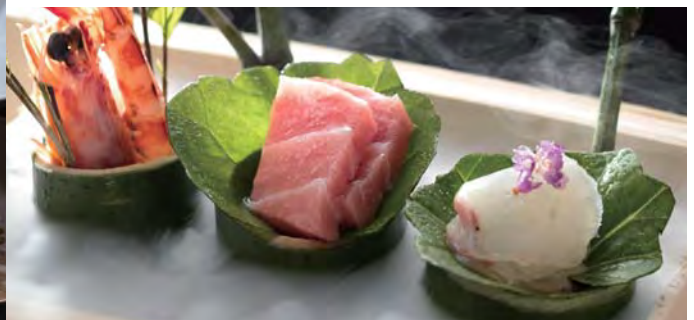
French cuisine/
Chinese cuisine
Japanese cuisine

We use opulent and beautiful in-season food products that can only be found here.

The land of Kumamoto is rich and fertile. The temperature range of the local climate makes the food here even more delicious. Also, the Ariake Sea is rich in seafood products.

We use ingredients unique to the area, and the amazing taste gives our guests the best experience they could have.

Our chefs utilize their skills to make the most of the treasure house of nature in the region. With fragrant dishes and fine arrangements, you can enjoy a supremely blissful trip from the first bite.





Houou no ma (Large hall 615 m²) HOUOU NO MA



**Each gathering at
one of our halls tells
a different story.**

The Outou no ma has a ceiling height of 7 meters. Its spacious atmosphere, that you up see up all around you, is decorated with Georgian crystal chandeliers.

From a space wrapped in translucence and brilliance, to a Japanese space that provides a traditional feeling.

We share in our guests' ideas for the precious gatherings they want to have, and we help in crafting a unique story that they will never forget.

Outou no ma (Medium hall 320 m²) OUTOU NO MA



Hakua no ma (Small hall 130.2 m²) HAKUA NO MA



Hana no ma (180 tatami mats) HANA NO MA



The colors and opulence start from
our spirit of hospitality.



ROYAL CHAPEL



SNACK QUEEN



SHOP



TSUKASA ROYAL HOTEL FLOOR GUIDE

Floor Guide

7F	GUEST ROOM	
6F	GUEST ROOM	
5F	GUEST ROOM	
4F	GUEST ROOM	
3F	JAPANESE STYLE BANQUET HALL	SHAKUYAKU NO MA SAZANKA NO MA TSUBAKI NO MA KIKU NO MA
		SYOUBU NO MA
		SUI NO MA
		SYO NO MA
		ASAGAO NO MA
		REI NO MA
		SAI NO MA
		RYO NO MA
		KEI NO MA
		KYO NO MA
2F	WESTERN STYLE BANQUET HALL	SHUNKYO NO MA HOUOU NO MA HISHO NO MA SAIKO NO MA
		OUTOU NO MA
		HAKUA NO MA
	SHRINE	
	PHOTO STUDIO	
	BRIDES ROOM	
1F	RECEPTION DESK	
	WEDDING CONCIERGE	
	ONSEN	
	RESTAURANT SHIKITEI	
	SNACK QUEEN	
	SHOP	